

SPECIAL POINTS OF INTEREST:

- **EFM meeting, January 3rd, Noon**
- **Feast of the Epiphany, 6PM, January 6th**
- **Outreach meeting, Tue. January 20th, 7 PM, Parish Hall**
- **February 5th is the next dinner for the Good Shepherd Team**

INSIDE THIS ISSUE:

Christian Education	2
Outreach	3
Pastoral Care	4
Service Schedule	5
Communications	6

From the Rector

Caroline, barely 4 years old, sat on the floor in the Sunday School room. She was staring at a work of art, a wooden model of the Last Supper. Her little face was intent, her straggly blond hair pushed back. I went over and sat beside her. She reached out and touched the tiny wooden cup and plate on the model. "This is the chalice," she said, "and this is the paten." (She had learned the special word for the plate used at communion.) We sat in silence another minute or two. Then she sat up straight, turned to me, and said, "You know—Jesus could give a friend party and invite the *whole world!*" At 4 years old, she knew what this season of Epiphany is about—the inviting of the whole world to a party, the welcome of all to be friends with Jesus and with one another. At around 4 or 5 years old parties begin to be very

important. (I can remember a daughter crying "Janie says she won't invite me to her birthday party!" And I remember her joy when included in one of these important social events.)



It is no wonder that Caroline recognized the Last Supper for what it was—a party of friends. And it is wonderful that she understood that Jesus would love to have everyone in the world gathered around that party table. In this church season of Epiphany, we remember the three magi, they who took

the invitation to join the Jesus party out to the corners of the world. We remember how Jesus himself stepped out onto the public stage at his baptism and then invited those who were willing to come with him. He and his friends traveled many miles to widen the circle around his table. We remember with gratitude how others then carried the invitation from country to country, from generation to generation, until a note arrived at our own doors with that delicious leading line: "You are invited." Here's to the party given by our generous Friend. Let's spread the word: Jesus is giving a friend party and *you're invited.* Have a light-filled Epiphany! Catherine

Feast of the Epiphany

Schedule of the evening for Wednesday, January 6th
 6:00: Holy Eucharist with the story of the spread of the light of Christ. Simple parts will be assigned as people arrive.
 6:45: International dinner to remind us of the spread of Christ's light throughout the world.

During dinner everyone is asked to consider how they might support the Church's mission with their time and talent in the coming year. Time and Talent sheets will be on each table. (And also be available in church and on the website through January 24.)

Bring an international dish and a beverage to share. It is fine to bring wine as long as you also bring a non-alcoholic alternative. Childcare will be available. Bring a contribution for the young people who will assist with childcare and clean-up. The money will go to support their upcoming pilgrimage.



“Kanuga Conferences is located in the mountains of Western North Carolina. Affiliated with the Episcopal Church, open to all, Kanuga sponsors programs and hosts customized meetings for up to 440 guests. Kanuga is not just a place, it’s an experience!”



Christian Education: Youth

Two amazing, once-in-a-lifetime youth opportunities:

1-Youth Pilgrimage to the Holy Land, July 4-Aug. 7, ages 16-20:

www.kanuga.org/conferences/2010/holyland.shtml

(Deadline is Feb. 15th)

2-Freedom Ride 2010: A Pilgrimage of Reconciliation, July 9-18, rising 9-12 graders:

www.episdioncyouth.org/freedomride2010

Church of the Servant and our diocese can help with funds for these. Brochures are on parish hall board.

Flyers for **Camp Kanuga** in the mountains and **Camp Trinity** at Pine Knoll Shores are also on the bulletin board. These camps are for ages 7-16. Scholarship help is available.



Episcopal Campus Ministry: Beginning January 17, there will be a simple Eucharist at 6:00 pm every Sunday evening at COS. It will be celebrated by our campus minister, the Rev. Tim Dols, and music will be provided by UNCW grad student and guitarist Jake Melnyk. Though the campus ministry provides the leadership for this service, all are welcome to attend. College students will gather for dinner and a program after the service.

Christian Education: Adult

Those interested in finding out about EFM are asked to contact Bates or Ed Toone (686-5035). The cost, which can be put on a charge card, is \$340 per year. You can google “efm” to find out more about the program. Bates and Ed will meet with interested persons after the 11:00 am service on Jan. 3 with the

intent of starting a group in mid January.

Opportunities for Adults at Kanuga Conference Center (near Asheville, NC):

Jan. 14-17 *It’s not too late!* Knitting and Quilting Retreat

Feb. 21-24 Lenten Retreat: Stories of Hope

Feb. 28-March 3 Nonviolence: A Faithful Response
Apr. 25-28 Healing and Wholeness Retreat

And more!
For more information, see the bulletin board or Kanuga brochure in the parish hall or contact Kanuga at 828-692-9136; www.kanuga.org.

Prayer Partners for J2A

The J2A Pilgrimage group would like to acquire prayer partners. Each adult prayer partner will remain anonymous to the youth for a portion of this semester. Your prayers will continue through the Pilgrimage to Wyoming in June.

Our youth travelers in June will be: Katherine Bartlett, Rachel Posey, Hannah Gary, Ben Snow, Haley Koehler, Brent Koehler, and Tess Colby. The adult leaders are: Margie Hunter, Bill Mercier, Mike Chapman, and Jen Gallo. If you

are interested in becoming a prayer partner to an individual, please contact Jennifer Gallo at jen-gallo@ec.rr.com or 392-3882. Thanks for all of the support we get from you!

Outreach



Outreach now has its own Email address: outreach@cosepiscopal.com Outreach meets the third Tuesday of each month at 7 PM. All are welcome! Outreach is stretching its arms and invites everyone to come up close and cuddle!

Serving food at Good Shepherd Center Some of our projects are ongoing ; Some have many smaller projects under one heading; Some are planned for a time and then are "Done-in-a-Day"; Some tag along on other community projects.

Take a look at the choices: Bargain Box; Books for ESL Students; Care Kits and Banana Splits; Christmas from COS; College Park Elementary School Support Program; Empty Bowls; Environmental Stewardship; Good Shepherd Center 1st Fri-

day Dinners; Mother Hubbard's Cupboard; Interfaith Refugee Ministry of Diocese of East Carolina; Wilmington Interfaith Hospitality Network.

Empty Bowls will take place at St. James Episcopal Parish on March 19th. The community-based group meets at COS and would welcome your help and your company. Our own Grace Crooks introduced the idea of Empty Bowls to New Hanover County 10 years ago. March 19th will mark its 5th anniversary!

Community Supported Agriculture vegetable subscriptions! Repeat customers may sign up until February 1st when memberships are open to those on Black River's waiting list. Delivery dates: 4/7/10 - 7/21/10 to COS @ 4:30. Price: \$275.00 for 16 weeks of produce to feed 4 people.

Interfaith Refuge Ministry

In Matthew (25:35) Jesus explains how we should live our faith: "For I was hungry and you gave me food, I was thirsty and you gave me drink, I was a stranger and you welcomed me."

On November 8th several of the congregation attended a presentation after the IIAM service by Susan Hussan, director of the Interfaith Refugee Ministry (IRM) in New Bern to learn about their work and the new sub-office that will open in Wilmington in January. The Church of the Servant lives a spirit of hospitality each Sunday to newcomers like me, and Susan was asking us to show hospitality to today's strangers: refugees and immigrants. The Episcopal Migration Ministries (EMM), of which Interfaith Refugee Ministries is one of nine local affiliates, does the

practical work of resettling refugees in the United States. These refugees are people who would be persecuted or killed if they returned to their homelands. Their plight is urgent and their options very limited. EMM works with sponsor organizations for many of the refugees. Teaching them how to live in the United States, helping them find employment, taking them to medical checkups, teaching them to use public transportation and helping them learn English are just a few of their needs. The goal is to help them to become self-sufficient within four to six months. Susan Hussan urged those of us attending her presentation to consider sponsoring a refugee/ refugee family. Here are options for a church alone or with another church:

Full-sponsorship: Help a family by finding them housing, furnishings, clothing and jobs; providing help in learning English; making them a part of their community. This requires a concerted team effort with many adults involved.

Mary and Joseph Packs: Prepare and deliver basic kitchen items, personal hygiene items or welcome packs to those families who have no church or sponsorship.

Contributions and Delivery: Help collect and deliver donated, good quality used furniture, household items, computers, bikes or cars.

Partial Co-Sponsorship: Collect and deliver furnishings and household goods (per a list of needed items) for a family and donate their maintenance support for at least one month, at

"For I was hungry and you gave me food, I was thirsty and you gave me drink, I was a stranger and you welcomed me."

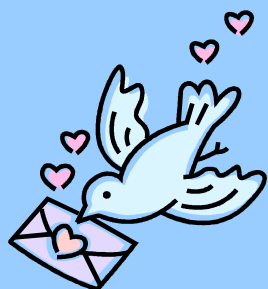
(Continued on page 4)



Winter lawn,
littered with leaves,
at such a sparse time of year. . .
who believes in God's abundance?
Those with the Holy Spirit flame flickering
through the windows of their souls,
those with holy fire burning in their hearts
that consistently sparks good will to others,
the abundant nurturing love of a mother
keeping the cold from her child's soul.

Amy Newsom

“Let mutual love
continue. Do not
neglect to show
hospitality to
strangers, for by
doing that some
have entertained
angels without
knowing it.”



Interfaith Refuge Ministry *continued*

least \$600. If possible, the church would also help teach English, mentor, transport or help with job search.

Volunteers: Members of the church community can volunteer to teach ESOL; visit refugees who do not have sponsorship, transport refugees to job interviews, medical appointments, etc.; teach every day skills (operating a thermostat, writing checks, etc.)

If you want to learn more about IRM or have thoughts about how Church of the Servant can best get involved in this ministry, please speak with me, Carol Milam—a newcomer in your midst—or with any member of the Outreach Committee. I will serve on the Advisory Committee to IRM so we can keep the dialogue going between COS and IRM.

This is a period of discernment and we need all of your prayers and advice on how best to answer God's call. We are told in Hebrews 13: 1 -2, “Let mutual love continue. Do not neglect to show hospitality to strangers, for by doing that some have entertained angels without knowing it.”

-Carol Milam

Pastoral Care

Our parish has persons who can't attend on a regular basis. We can let them know we think of them with a card, call or visit.

Mamie Bryan; 402 Pine Valley; Wilmington, NC 28412; Phone: 791-1817.

All contacts

Jim Poteat; 1790 Fork Mountain Road, Bakersville, NC 28705; Cards only

The Church of the Servant extends heartfelt condolences to Alfreda, Arie and Courtney Gee on the death of Courtney's mother, Ethel Travis Gee, on December 25th.

“Give to the departed eternal rest; Let light perpetual shine upon them.” BCP p. 387

January Services Schedule

ACOLYTES: Contact Arie Gee 515-1085; amg7882@uncw [Also ECM parish liaison]

<u>Jan. 3</u>	<u>Jan. 10</u>	<u>Jan. 17</u>	<u>Jan. 24</u>	<u>Jan. 31</u>
Tess Colby	Casey Ludlum	ECM	Tess Colby	Arie Gee
John Barri	Lauren Posey		John Barri	Hannah Gary
Eva Barri	Rachel Posey		Eva Barri	Ben Snow

ALTAR GUILD: Contact Earla Pope 763-6929; earlapope@bellsouth.net

<u>Jan. 3</u>	<u>Jan. 10</u>	<u>Jan. 17</u>	<u>Jan. 24</u>	<u>Jan. 31</u>
Cheryl Plowden	Jack Morgan	Dona Robertson	Rose Bauerlein	Rebecca Blake
Earla Pope				

LECTORS 8:30 AM: Reader (top line) and Prayers. Contact Grace Crooks 796-6550

<u>Jan. 3</u>	<u>Jan. 10</u>	<u>Jan. 17</u>	<u>Jan. 24</u>	<u>Jan. 31</u>
Mark O'Neal	Lee Blalock	Harold Horne	Mary Beth Koehler	John Ormond
Harold Horne	John Ormond	Chip Blalock	Phil Van Campen	Mary Beth Kohler

READERS & LEM I I AM: Contact Kathie Jorgensen 791-6357; jmail@ec.rr.com.

Top line: OT reading; 2nd line: Epistle; 3rd line: Prayers of the People

<u>Jan. 3</u>	<u>Jan. 10</u>	<u>Jan. 17</u>	<u>Jan. 24</u>	<u>Jan. 31</u>
Phil Stine	Janet Autry*	Bill Christophersen*	Ken Colston*	Phil Jorgensen*
Laura Williams*	Bill Mercier*	Kim Sincox	Rhoda Gary*	Kathie Jorgensen
Abram Barefoot*	Margie Hickman	Jan Christophersen*	Doug Sincox	Liz Bryan*

GREETERS 8:30 (top line) and I I AM: Contact Sharon Irwin 392-9722; sharonirwin@peoplepc.com

<u>Jan. 3</u>	<u>Jan. 10</u>	<u>Jan. 17</u>	<u>Jan. 24</u>	<u>Jan. 31</u>
Mary Beth Koehler	Anne Knopf	Cheryl Plowden	Joan Geizler-Ludlum	Grace Crooks
Laura Adams	Ken Colston	Jane Broder	Alfreda & Courtney Gee	Sharon Irwin

VERGERS: Contact Doug Sincox 799-9456; kimsincox@bellsouth.net

<u>Jan. 3</u>	<u>Jan. 10</u>	<u>Jan. 17</u>	<u>Jan. 24</u>	<u>Jan. 31</u>
Don Hickey	Don Hickey	David Hoolahan	Mike Barri	Barbara Rowe

VESTRY PERSON: Contact Philip Stine 793-4469; philipstine@earthlink.com

<u>Jan. 3</u>	<u>Jan. 10</u>	<u>Jan. 17</u>	<u>Jan. 24</u>	<u>Jan. 31</u>
Don Hickey	Don Hickey	Keith McCahan	Joan Geizler-Ludlum	Mary Ames Booker



Tideline is the monthly newsletter of Church of the Servant, Episcopal, 4925 Oriole Dr., Wilmington NC 28403.

Phone: 910-395-0616

Fax: 910-395-1600

E-mail: admin@cosepiscopal.com

Web: www.cosepiscopal.com



Visit Church of the Servant on Facebook

Church of the Servant Organization

Bishop of East Carolina: The Rt. Rev. Clifton Daniel, 3rd, DD

Rector: The Reverend Catherine Powell

Deacon: The Reverend Sonja Robinson

Music Director & Organist: Jennifer Sugerik

Parish Administrator: Peggy Coulson

Sexton: Luis Hernandez

VESTRY & OFFICERS

Senior Warden: Philip Stine

Junior Warden & Buildings/Grounds: Don Hickey

Treasurer: Janet Autry

Clerk & Communications: Mary Ames Booker

Rebecca Blake, Marty Brown, Dennis Conlon,

David Hoolahan, Keith McCahan, Stephanie Norris,

Cristi Pollock, Carl Salisbury, Laura Williams

Communications

2009 Year end vestry reports are available on the church website:

http://www.cosepiscopal.com/images/Year_End_Reports.pdf

Have you visited the website lately? There is a new area for Newcomers. See the church calendar and much more! Our Website Manager and vestry liaison is Marty Brown.

Do you need a church directory? Printed copies are in the church office and may be picked up during regular office hours or see the vestry person on a Sunday.

Are you receiving the Service Bulletin Notices each week via email? If not, please let Peggy know: admin@cosepiscopal.com

Tideline is now being distributed electronically. The deadline for information is the 20th of each month. Send material to Mary Ames Booker:

maryames@ec.rr.com. The Rector is the final editor for each edition. Please notify the Church of change of addresses, including email.



Psalm 36

There are those who would cheat;
there are those who would steal,
and think they can hide –
their sins never revealed.

But you are the judge,
and you judge us with love.
We're nestled by wings
of your spirit, the dove.

You give us food at your table
and drinks of delight.
May I never try hiding
my sins from your sight.

Jan Christophersen